

PRESSURE AND VACUUM GAUGE

Pressure gauge, black enamelled steel case, with or without back flange, radial connection 3/8" or 1/2", measuring range between 0 and 60 bar, built with dial diam. 80 or 100 mm,

Art. 67220/A rimless
Art. 67220/B round rim



Pressure and vacuum gauge, black enamelled steel case, with or without back flange, dial diameter 80 or 100 mm, range -76 and 25 bar, radial connection 3/8" o 1/2"

Art. 67230/A rimless
Art. 67230/B round rim



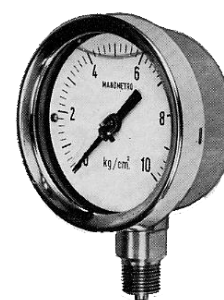
Vacuum gauge, black enamelled steel case, with or without back flange, dial diameter 80 or 100 mm, range -76 to 0cm or -1 to 0 bar, radial connection 3/8" o 1/2"

Art. 67250/A rimless
Art. 67250/B round rim



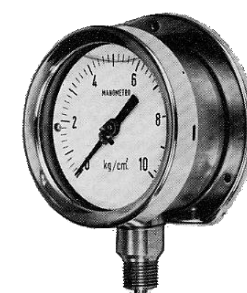
Pressure gauge or pressure and vacuum gauge, without flange, radial connection 3/8" - 1/2", range between -76 mm and +60 bar, built with dial diam. 80 - 100 - 160 mm, stainless steel case dry or on glycerine bath.

Art. 67251/A1 dry with brass pivot
Art. 67251/A2 glycerine with brass pivot
Art. 67251/A3 dry with stainless steel AISI 316 pivot and springs
Art. 67251/A4 glycerine with stainless steel AISI 316 pivot and springs



Pressure gauge or pressure and vacuum gauge, with flange, radial connection 3/8" - 1/2", range between -76 mm and +60 bar, built with dial diam. 80 - 100 - 160 mm, tight stainless steel case dry or on glycerine bath.

Art. 67252/B1 dry with brass pivot
Art. 67252/B2 glycerine with brass pivot
Art. 67252/B3 dry with stainless steel AISI 316 pivot and springs
Art. 67252/B4 glycerine with stainless steel AISI 316 pivot and springs





PRESSURE AND VACUUM GAUGE

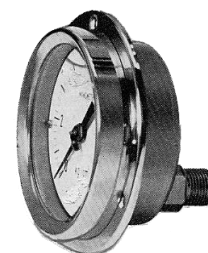
Pressure gauge or pressure and vacuum gauge, with or without front flange, radial connection $\frac{3}{8}$ " – $\frac{1}{2}$ ", range between -76 mm and $+60$ bar, built with dial diam. 80 or 100 mm, tight stainless steel case dry or on glycerine bath.

Art. 67253/D1 dry with brass pivot

Art. 67253/D2 glycerine with brass pivot

Art. 67253/D3 dry with stainless steel AISI 316 pivot and springs

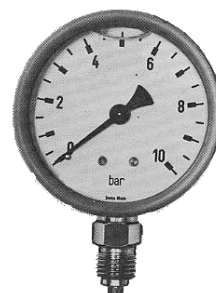
Art. 67253/D4 glycerine with stainless steel AISI 316 pivot and springs



Pressure or pressure and vacuum gauge, with or without back flange, radial connection $\frac{1}{4}$ ", range -76 mm to $+60$ bar or up to 600 bar, tight case diam. 60 mm in glycerine bath

Art. 67226/A/1 radial connection up to 60 bar

Art. 67226/A/2 radial connection up to 600 bar



Pressure or pressure and vacuum gauge, with or without front flange, posterior connection $\frac{1}{4}$ ", range -76 mm to $+60$ bar or up to 600 bar, tight case diam. 60 mm in glycerine bath

Art. 67226/D/1 posterior connection up to 60 bar

Art. 67226/D/2 posterior connection up to 600 bar



Art. 67224

Pressure control gauge with mirror reading, radial connection $\frac{1}{2}$ ", dial 100 or 160 mm, built with custom scales and supplied with certification.



Pressure gauge for high pressures, radial connection $\frac{1}{2}$ ", range from $0+100$ up to $0+1.600$ bar, dial diam. 100 – 130 – 150 mm

Art. 67222/A1 diam 100 dry

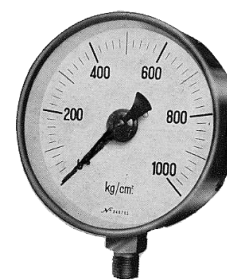
Art. 67222/A2 diam 100 in glycerin

Art. 67222/A3 diam 130 dry

Art. 67222/A4 diam 130 in glycerin

Art. 67222/A5 diam 150 dry

Art. 67222/A6 diam 150 in glycerin





PRESSURE AND VACUUM GAUGE

Pressure and vacuum gauge for refrigerators with freon thermometric ranges, with or without fixing flange, radial or posterior connection $\frac{1}{4}$ " Sae, ranges $-1 +9$ bar, $-1 +15$ and $-1 +30$ bar.

Art. 67254/A dial diam. 60 mm radial connection

Art. 67254/D dial diam. 60 mm posterior connection



Art. 67223/B/80

Pressure and vacuum gauge for refrigerators with freon thermometric ranges, with back fixing flange, radial connection $\frac{1}{4}$ ", ranges $-1 +10$ bar and $-1 +16$. Dial 80 mm glycerine.



Art. 67223/B/100

Pressure and vacuum gauge for refrigerators with freon thermometric ranges, with back fixing flange, radial connection $\frac{1}{2}$ ", ranges $-1 +9$ bar, $-1 +15$ and $-1 +30$ bar. Dial 100 mm in glycerine.



Art. 67227

Brass valve for pressure gauge with packing gland, threaded $\frac{1}{4}$ " - $\frac{3}{8}$ " - $\frac{1}{2}$ ".



Art. 67228

Brass valve for pressure gauge with packing gland and little flange, threaded $\frac{1}{4}$ " - $\frac{3}{8}$ " - $\frac{1}{2}$ ".





PRESSURE AND VACUUM GAUGE

Manometer at water column, for low pressure, on wooden base.

Art. 67238/A	grad. 200 mm	35 x 8 cm
Art. 67238/B	grad. 300 mm	45 x 8 cm
Art. 67238/C	grad. 400 mm	55 x 8 cm
Art. 67238/D	grad. 500 mm	65 x 8 cm
Art. 67238/E	grad. 600 mm	75 x 8 cm
Art. 67238/F	grad. 800 mm	95 x 8 cm
Art. 67238/G	grad. 1000 mm	115 x 8 cm



Art. 90001

Manometer at mercury column, on steel base, vite di scarico, graduation in BAR

Art. 90001/A	grad. 0 +1 bar	110 x 8 cm
Art. 90001/B	grad. 0 +1,5 bar	150 x 8 cm



Art. 67239

Vacuum gauge at mercury column, range 0 -76 cm, on wooden base 95 x 8 cm.

